

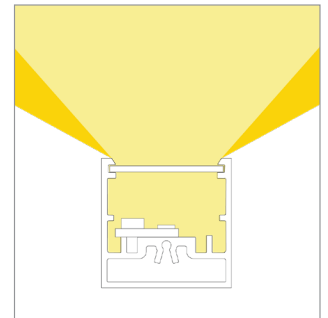
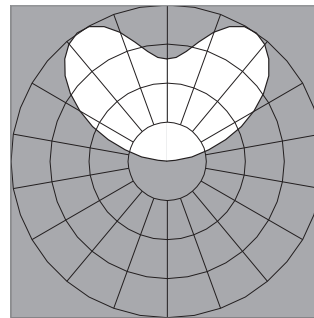
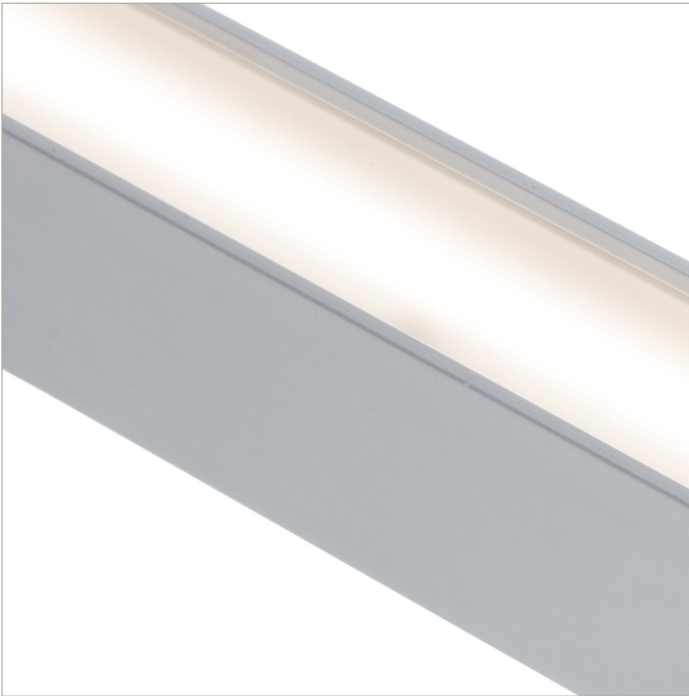
IES Report
BoxRail® | 107 | 120° Batwing Lens | 80 CRI | LO

107-BX-XX-4-48-XX-XX-XX-X-X-Z-LO-35-G1-X-AL / WH-X

	2700K	3000K	3500K	4000K
Efficacy - Lumens per Watt	98	101	103	105
Total Lumens, 4' rail length (1219mm)	1455	1501	1532	1562
Lumens per foot (305mm)	364	375	383	391
Input Power (W), 4' rail length (1219mm)	15.0	15.0	15.0	15.0
Watts per foot (305mm)	3.8	3.8	3.8	3.8
CRI	85	85	85	85

Due to the large number of options in Vode's product offering, most Vode IES reports are factored reports prepared from source reports. Source reports are the IES test reports prepared for Vode by an NVLAP accredited photometric test laboratory. Factored reports are based on data from the Vode source reports.

If the data above is in black, it is directly from a Vode source report. If it is in grey, it is factored from Vode source reports. Reference details on Vode source reports can be found on the [IES File Finder](#) page on [vode.com](#).



IES Report

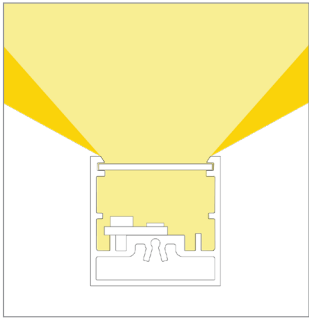
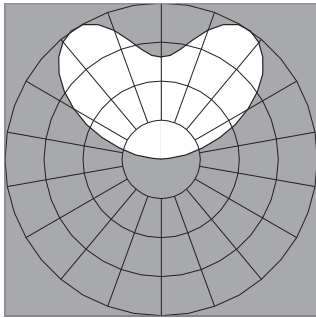
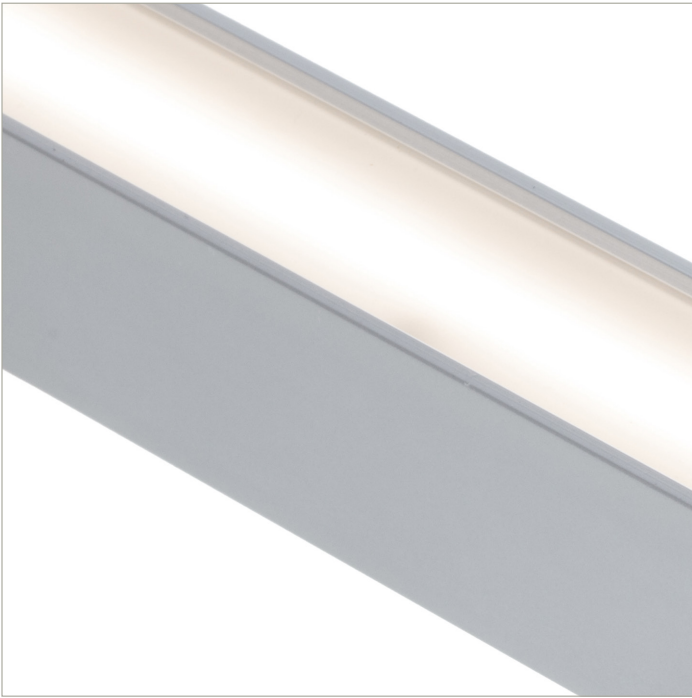
BoxRail® | 107 | 120° Batwing Lens | 80 CRI | SO

107-BX-XX-4-48-XX-XX-XX-XX-X-X-Z-SO-35-G1-X-AL / WH-X

	2700K	3000K	3500K	4000K
Efficacy - Lumens per Watt	122	126	128	131
Total Lumens, 4' rail length (1219mm)	2910	3002	3063	3124
Lumens per foot (305mm)	727	750	766	781
Input Power (W), 4' rail length (1219mm)	24.0	24.0	24.0	24.0
Watts per foot (305mm)	6.0	6.0	6.0	6.0
CRI	85	85	85	85

Due to the large number of options in Vode's product offering, most Vode IES reports are factored reports prepared from source reports. Source reports are the IES test reports prepared for Vode by an NVLAP accredited photometric test laboratory. Factored reports are based on data from the Vode source reports.

If the data above is in black, it is directly from a Vode source report. If it is in grey, it is factored from Vode source reports. Reference details on Vode source reports can be found on the [IES File Finder](#) page on [vode.com](#).



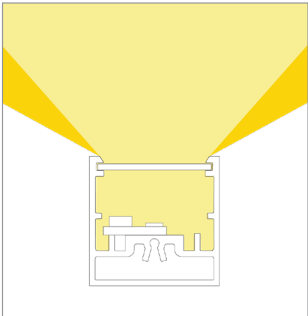
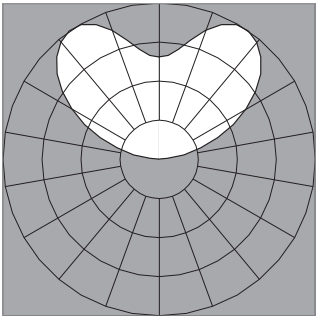
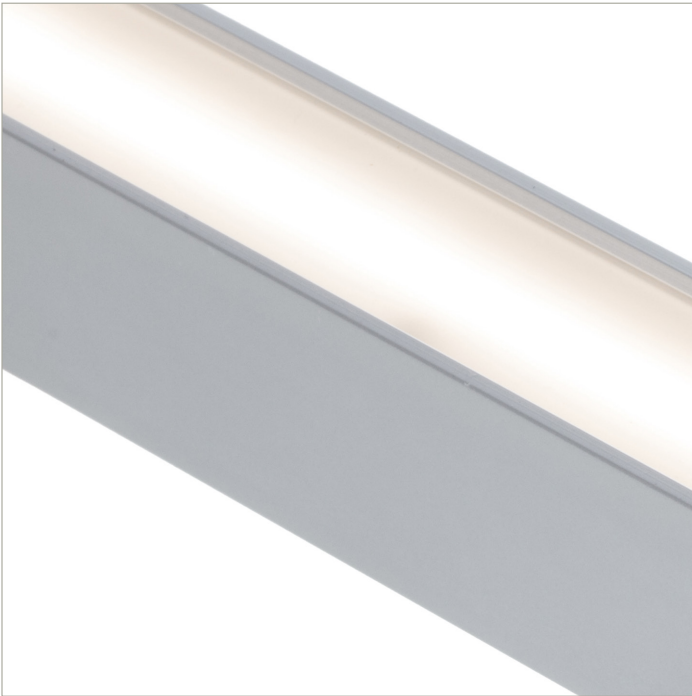
IES Report
BoxRail® | 107 | 120° Batwing Lens | 80 CRI | HO

107-BX-XX-4-48-XX-XX-XX-X-X-Z-HO-35-G1-X-AL / WH-X

	2700K	3000K	3500K	4000K
Efficacy - Lumens per Watt	113	116	119	121
Total Lumens, 4' rail length (1219mm)	5529	5704	5820	5936
Lumens per foot (305mm)	1382	1426	1455	1484
Input Power (W), 4' rail length (1219mm)	49.2	49.2	49.2	49.2
Watts per foot (305mm)	12.4	12.4	12.4	12.4
CRI	85	85	85	85

Due to the large number of options in Vode's product offering, most Vode IES reports are factored reports prepared from source reports. Source reports are the IES test reports prepared for Vode by an NVLAP accredited photometric test laboratory. Factored reports are based on data from the Vode source reports.

If the data above is in black, it is directly from a Vode source report. If it is in grey, it is factored from Vode source reports. Reference details on Vode source reports can be found on the [IES File Finder](#) page on [vode.com](#).



IES Report

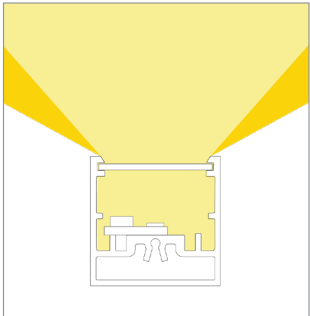
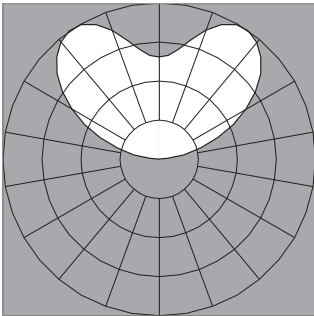
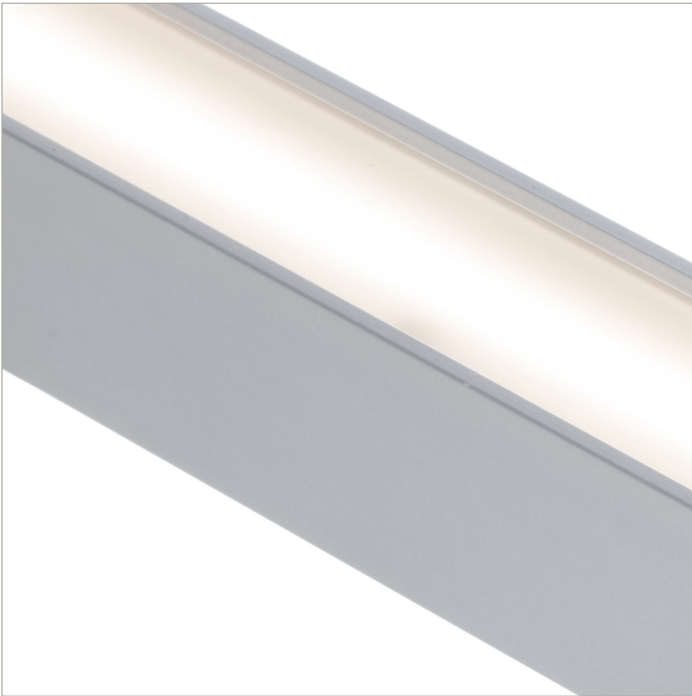
BoxRail[®] | 107 | 120° Batwing Lens | 90 CRI | LO

107-BX-XX-4-48-XX-XX-XX-XX-X-X-Z-LO-359-G1-X-AL / WH-X

	2700K	3000K	3500K	4000K
Efficacy - Lumens per Watt	84	87	89	91
Total Lumens, 4' rail length (1219mm)	1254	1294	1320	1347
Lumens per foot (305mm)	314	323	330	337
Input Power (W), 4' rail length (1219mm)	15.0	15.0	15.0	15.0
Watts per foot (305mm)	3.8	3.8	3.8	3.8
CRI	96	96	96	96

Due to the large number of options in Vode’s product offering, most Vode IES reports are factored reports prepared from source reports. Source reports are the IES test reports prepared for Vode by an NVLAP accredited photometric test laboratory. Factored reports are based on data from the Vode source reports.

If the data above is in black, it is directly from a Vode source report. If it is in grey, it is factored from Vode source reports. Reference details on Vode source reports can be found on the [IES File Finder](#) page on [vode.com](#).



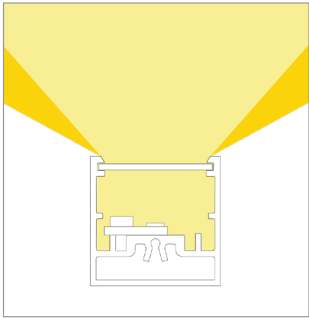
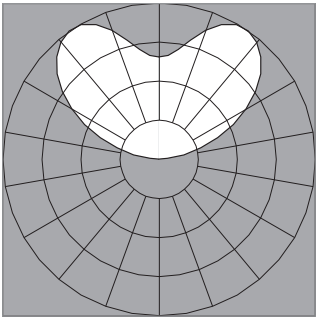
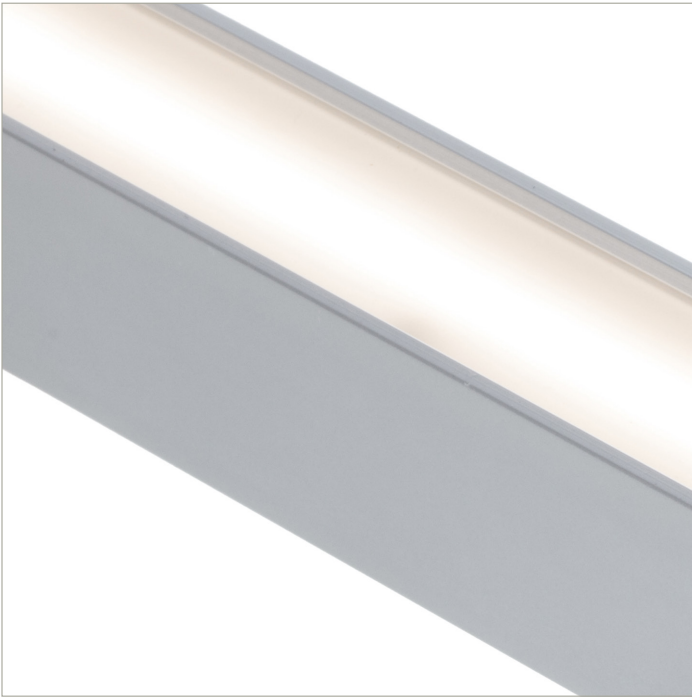
IES Report
BoxRail® | 107 | 120° Batwing Lens | 90 CRI | SO

107-BX-XX-4-48-XX-XX-XX-X-X-Z-SO-359-G1-X-AL / WH-X

	2700K	3000K	3500K	4000K
Efficacy - Lumens per Watt	105	109	111	113
Total Lumens, 4' rail length (1219mm)	2509	2588	2641	2693
Lumens per foot (305mm)	627	647	660	673
Input Power (W), 4' rail length (1219mm)	24.0	24.0	24.0	24.0
Watts per foot (305mm)	6.0	6.0	6.0	6.0
CRI	96	96	96	96

Due to the large number of options in Vode's product offering, most Vode IES reports are factored reports prepared from source reports. Source reports are the IES test reports prepared for Vode by an NVLAP accredited photometric test laboratory. Factored reports are based on data from the Vode source reports.

If the data above is in black, it is directly from a Vode source report. If it is in grey, it is factored from Vode source reports. Reference details on Vode source reports can be found on the [IES File Finder](#) page on [vode.com](#).



IES Report
BoxRail® | 107 | 120° Batwing Lens | 90 CRI | HO

107-BX-XX-4-48-XX-XX-XX-X-X-Z-HO-359-G1-X-AL / WH-X

	2700K	3000K	3500K	4000K
Efficacy - Lumens per Watt	97	100	102	104
Total Lumens, 4' rail length (1219mm)	4766	4917	5017	5118
Lumens per foot (305mm)	1192	1229	1254	1279
Input Power (W), 4' rail length (1219mm)	49.2	49.2	49.2	49.2
Watts per foot (305mm)	12.4	12.4	12.4	12.4
CRI	96	96	96	96

Due to the large number of options in Vode's product offering, most Vode IES reports are factored reports prepared from source reports. Source reports are the IES test reports prepared for Vode by an NVLAP accredited photometric test laboratory. Factored reports are based on data from the Vode source reports.

If the data above is in black, it is directly from a Vode source report. If it is in grey, it is factored from Vode source reports. Reference details on Vode source reports can be found on the [IES File Finder](#) page on [vode.com](#).